

Property Owner: Saratoga P.L.A.N.

Acreage: 33



The Ballston Creek Preserve is known for its views of this great blue heron rookery.

History: In May 2005, Saratoga P.L.A.N. completed its first land conservation project in the town of Ballston, acquiring 33 acres of land which has become the Ballston Creek Preserve. Patricia and Sven Peterson gave a conservation easement for 11 acres and donated the rest of the Property. The entire parcel of land was once an active farm, with fields for crops and grazing. The former owners used the land for passive recreation since 1955.

Today, a mixed forest of conifer and hardwood occupies the Property. This property is a vitally important link in the Ballston Creek Valley Greenway and Wildlife Corridor and lies just to the north and west of Shenentaha Park, which offers a connection point to the countywide multi-use Zim Smith Trail.

Directions: From Saratoga Springs, take Route 50 south (Ballston Ave.) toward Ballston Spa for about 6 miles. Go through the village and turn left at the top of the hill onto East High Street (NY-67). Go about 1 mile, through the stoplight, and turn right onto East Line Road (aka Rte 82). Continue on East Line for about ½ mile, and park at Shenentaha Park. Walk to the entrance just 22 yards up Eastline Rd – you will see a Saratoga P.L.A.N. sign.

From I87, take Exit 12. From 87 North, turn right onto Route 67. From 87 South, turn left. Drive approximately 1.5 miles and turn left onto Eastline Road (aka Route 82). Follow directions above from here.

ON THIS NATURE PRESERVE, IT IS UNLAWFUL TO:

- Hunt, trap, remove, harass, touch, or feed wildlife
- Camp, or ignite a fire
- View or attempt to view wildlife with artificial light
- Possess loaded or uncased firearms and/or traps
- Cut, remove, or damage any tree, shrub, or foliage, or any living or dead thing
- Permit dogs, cats, or other pets to run free. All animals must be leashed
- Use motorized vehicles, including snowmobiles, all-terrain vehicles, or similar off-road devices
- Leave anything brought with you onto the Preserve on the Preserve. Carry in, Carry out



Saratoga P.L.A.N.
112 Spring Street, Room 202
Saratoga Springs, NY 12866
(518) 587-5554
www.saratogaplan.org

Ballston Creek Preserve



Saratoga PLAN helps protect the exceptional quality of life in our region by conserving open spaces and special places for present and future generations.



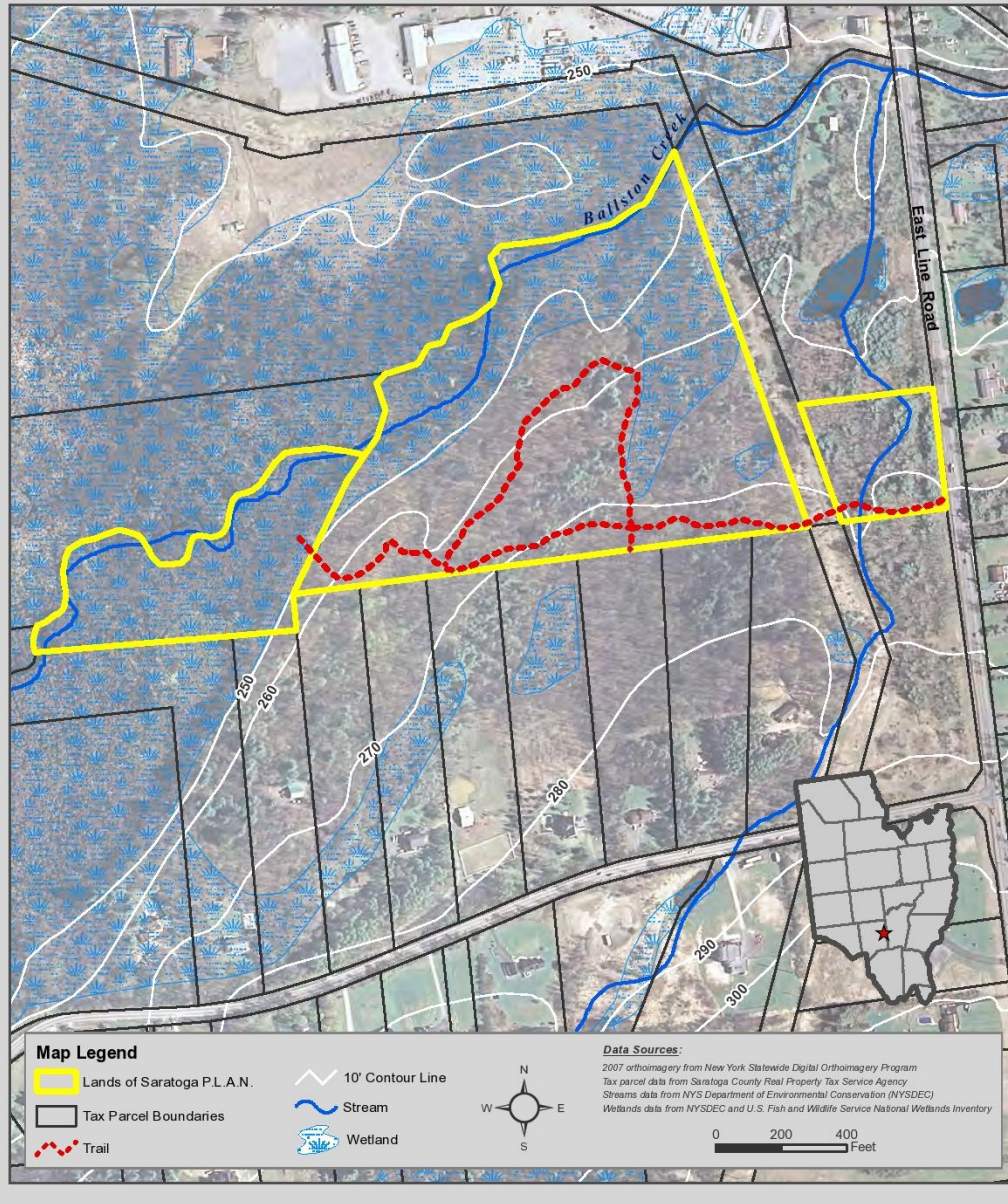
Joanne Murphy, 2007

Ballston Creek Preserve
409 East Line Road
Ballston NY, 12020



Ballston Creek Preserve

Tax Parcel #228.-3-26.11, 228.-3-26.12, 239.-2-68
East Line Road
Town of Ballston



Description: The old farm fields on this land have regrown into beautiful forests, while occasional older growth trees can be found along the old rock walls. A power line runs southeast to northwest and separates the section of the property along East Line Road from the western part of the preserve. The western and northern edges of the property border Ballston Creek and a large wetland. The preserve is mostly forested; trees are primarily mid-successional species. The wetlands on the western edge of the property contain a Great Blue Heron rookery. The land is mostly flat with a change in elevation of about 30 feet. The marked trails are seasonally wet and appropriate footwear is recommended.



Hikers enjoy watching Herons at Ballston Creek Preserve.

Highlights:

- **Great Blue Heron rookery**
- **Woodland wildflowers**
- **Proximity to Zim Smith Trail**
- **Gentle, looping trails**